



KONJAC SKIN CARE LEADER



WELLSHINE HONG KONG LTD.

UNIT 12, 18/F., THRIVING IND. CENTRE, 26-38 TSUI ROAD TSUEN WAN, HONG KONG

TEL : 852 - 2406 9030, 2406 9077 E-MAIL : sales@wellshinehk.com

<http://www.wellshinehk.com>

FACTORY CERTIFICATES



Patented Equipment 1



Patented Equipment 2



ZL 2017 1 0821298.6

Patent for invention of a frosted sponge and a preparation method

ZL 2019 1 0565664.5

Patent for invention of a konjac mask base cloth and a preparation method

ZL 2019 1 0952057.9

Patent for invention of konjac soap and a preparation method

ZL 2017 1 1497789.6

Patent for invention of a preparation method for baby wipes



amfori  BSCI
Trade with purpose



Patented Equipment 3

A safety product for baby to use
Pure natural traditional technology
Advanced production process

KONJAC



Suitable for all skin types

Konjac contains a variety of amino acids, minerals and rich vitamins, it is edible and medicinal, contains natural moisturizing factor glucomannan.

Konjac contains natural antibiotics to form antibacterial protective film on skin surface.

Pure natural plant fiber, no pigment, no preservatives, no chemical additives, biodegradable, eco-friendly.

Clean, exfoliate, massage and moisturizing, four functions in one, weak acid, Q-elastic and well-lubricated, daily use will not hurt the skin.

3D porous structure, deep cleaning skin, rich foam, fine bubbles bring SPA enjoyment.

KONJAC SPONGE:

1 Konjac Plants



2 Konjac Roots



3 Konjac Series Productions



PRODUCTION PROCESS:

Step.1 MIXING



Step.2 FILLING



Step.3 OXIDISED



Step.4 STEAMING



Step.5 FREEZING



Step.6 CLEANSING



Step.7 DRYING



Step.8 PACKING



PRODUCT FEATURE:

Pure Ingredients: 100% natural konjac plant fiber, glucomannan $\geq 96\%$, no chemical additive, no pigment, no fragrance.

Good Flexibility: 3D cellular fiber mesh structure, stable internal structure, strong toughness, pressure resistance test ≥ 2000 times, soft and durable.

Strong Absorption: good water absorption, it can absorb 5 times water of its own weight and oil & dirt on skin surface, soft, skin-friendly, and gentle cleansing.

Weak Acidic pH: pH 6.5-6.8 of konjac sponge, and 4.5-6.5 of healthy skin. The normal range of pH can make the skin in the best nutrition absorption condition.

Health and Eco-friendly: biodegradable, buried in soil after 3 months of natural degradation rate $\geq 96\%$.

HOW TO USE:

1.3-5 minutes in warm water. 2. Massage your face/body with or without soap. 3. Rinse it. 4. Dry it in a cool place.

After use, it is better to put konjac sponge in the refrigerator for next use.



KONJAC SPONGE—SHAPES



KONJAC SPONGE—ADDITIVES



KONJAC SPONGE—STATES



The Content	Dry State	Wet State	Freezing Dry State
Forming process	The product rinse after dehydration, hang a line into the room with dry, after 48 hours, around 50 °C temperature, naturally forming the shape of the sponge, such as inside the mould.	Dry sponge put into the purified water after soaking, add preservatives PE and then soaking 15 hours, sealed into the bag.	Frozen, sponge in low temperature and vacuum conditions make ice to sublimate directly out of the water in sponge. Sublimation of ice crystals at the same time for water vapour to escape, the porous structure can be uniform distribution of konjac sponge.
Moisture content	below 8%	5 times of dry sponge	below 10%
Shelf time	5 years Sealing requirement is relatively low	2 years Sealed strictly	5 years Sealed strictly
Advantage	A long shelf time The freight cost the lowest, save a longer time	Good appearance, soft Easy to identify the using purpose.	A long shelf life Recovery properties of water are outstanding. Freeze-drying product volume, shape basically remain unchanged similar as wet sponge, pore diameter is natural and stretched, without shrinkage phenomenon.
Disadvantage	Product shrinkage after drying, pore diameter is irregular, drying shrinkage will affect product appearance, not very beautiful; recovery properties of water are poor.	Must add preservatives and keep the high water content and high transport costs.	Easy to moisture absorption, must be sealed packaging. Easy deformation under the external force, do not squeeze.
Packing	Storage in bulk and using sealing container, prevent to be affected with damp.	Must be a single seal packing in OPP bag.	Cardboard boxes sealed packaging, coat or PVC/EVA material such as plastic box.



KONJAC TOWEL

Natural and safe for the whole family

- The production process is the same as konjac sponge
- Frozen-dry can be made into various shapes
- Wet size 170 * 170 * 3 mm / 25g

KONJAC TOWEL—FREEZING DRY STATE



Butterfly

Line

Handkerchief

Leaf

Forming process	Frozen, sponge in low temperature and vacuum conditions make ice to sublimate directly out of the water in sponge. Sublimation of ice crystals at the same time for water vapour to escape, the porous structure can be uniform distribution of konjac sponge.
Moisture content	below 10%
Shelf time	5 years Sealed strictly
Advantage	A long shelf life; Recovery properties of water are outstanding. Freeze-drying product volume, shape basically remain unchanged similar as wet sponge, pore diameter is natural and stretched, without shrinkage phenomenon.
Disadvantage	Easy to moisture absorption, must be sealed packaging. Easy deformation under the external force, do not squeeze.
Packing	Cardboard boxes sealed packaging, coat or PVC/EVA material such as plastic box.

KONJAC JELLY SOAP

Gently clean dirt and excess oil from pores

Extract natural plant essence, oil control and moisturizing

Soap-free, weak acid, delicate and gentle, not irritating

Less foaming, easy to rinse, refreshing and not slippery



Glucomannan

a pure plant-derived active substance, which can absorb water molecules 200 times than its own volume. It has excellent biocompatibility and film-forming. It is a natural barrier for the skin to resist external invasion.



Tamarind polysaccharide

excellent natural plant-derived skin care products, rich in amino acids and minerals, penetrate pores, clean oil and dirt, does not damage sebum membrane, firmly lock skin moisture and moisturize skin.

KONJAC JELLY SOAP—SHAPES



Ball

70g

KP70B



Flower

15g

KP15F



Paw

60g

KP60P



Cucurbit

74g

KP74C



Water-Drop

78g

KP78W

KONJAC JELLY SOAP—ADDITIVES



Pure

Cleansing and moisturizing, forming a water locking film on the skin surface.



Rose

Moisturizing and whitening, enhance skin elasticity.



Green Tea

Oil control and clean skin dirt, keep skin water and oil balance.



Lemon

Adjusting skin tone, reduce dark, moisturizing the skin.



USING TEST DATA

ITEM	Konjac Mask	Non-woven Mask
NW of Base Film (g)	9.7	1.47
Weight of Adding the Nutrient Solution (g)	25.3	25.26
Weight Before Using (g) -- Substrate + Nutrient Solution	31.11	24.2
Weight After Using (g)	17.68	18.07
Skin Absorption (g)	13.42	6.13

Test Analysis: After using konjac mask, the efficient absorption capacity of the skin is 2 times of the non-woven mask. Unique 3D plant mesh structure, natural moisturizing factor KGM, no preservatives. Efficient absorption, deeply moisturizing!



Pure

Deep cleansing,
Gently exfoliating.



Bamboo Charcoal

Adsorption and
control oil.
Eliminate black and
exfoliating.



Lavender

Elieve and calm.
Accelerate cell
regeneration.



Blueberry

Nourishing and
whitening.
Repair and
antioxidant.



Peppermint

Control oil and
refreshing.
Anti-inflammatory
and calm skin.



Rose

Detoxifying,
beautifying
and nourishing skin.



Aloe

Nourishing and
Moisturizing.
Relieves discomfort
and antianaphylaxis.



Collagen

Anti-wrinkle and
repair cell
regeneration.
Recover the elastic.



Pine Powder

Whitening
andbrighting.
Refreshing and
smoothing.



Green Tea

Firming and smoothing.
Antibacterial and
antioxidant effect.
Radiation protection.



French Red Clay

Removing toxins and
bacteriostat.



Loess

Deep cleansing.
Gently exfoliation.



Green Juice

Detoxifying,
beautifying
and nourishing
skin.



Lemon

Brighting and
Whitening.
Reduce the
pigmentation.



French Pink Clay

Removing toxins and
bacteriostat.



Natural and Safe, Family Share

KONJAC BASE MATERIALS

Patent No.: ZL 2109 1 0565664.5

Safety Ingredients: 100% natural konjac plant fiber, no chemical additive, no pigment, no perfume, suitable for all skin types, sensitive skin can use.

Good Adhesion: 0.2mm microfiber film, jelly gel texture, soft touch, strong air permeability, forming light negative pressure on the skin surface, skin-friendly.

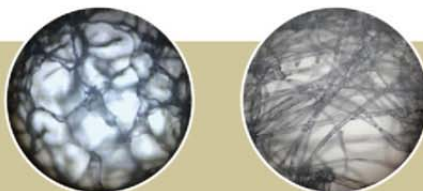
Strong Absorptivity: 3D cellular fiber mesh structure, essence absorptivity is 3 times of its own weight, essence transport capacity is 2 times of ordinary non-woven film.

Solid moisturizing: Glucomannan in the film $\geq 96\%$, and the solid moisturizing agent on the skin surface helps to absorb moisture and actively lock-water.

Weak Acidic: pH 6.5-7.0 fit healthy skin, in the range of normal pH value, make the skin in the best condition of nutrition absorption.

Health and Eco-friend: biodegradable, buried in the earth for 3 months, natural degradation rate $\geq 96\%$.

Microscopically,
40 magnification,
3D fiber structure



KONJAC BASE FILMS



TYPE A MASK

SIZE: 23*21.6 CM



TYPE B MASK

SIZE: 24*21.5 CM



MASK FOR CHEST

SIZE: 20*13.5 CM



MASK FOR NECK

SIZE: 18*9.5 CM



TYPE A EYE PATCH

SIZE: 7*3.25 CM



TYPE B EYE PATCH

SIZE: 9*5 CM



TYPE C EYE PATCH

SIZE: 17.5*5 CM



EYECARE PATCH

SIZE: 6.5*6.5 CM



TYPE A NOSECARE FILM

SIZE: 6.8*6.3 CM



TYPE B NOSECARE FILM

SIZE: 8.8*3.8 CM



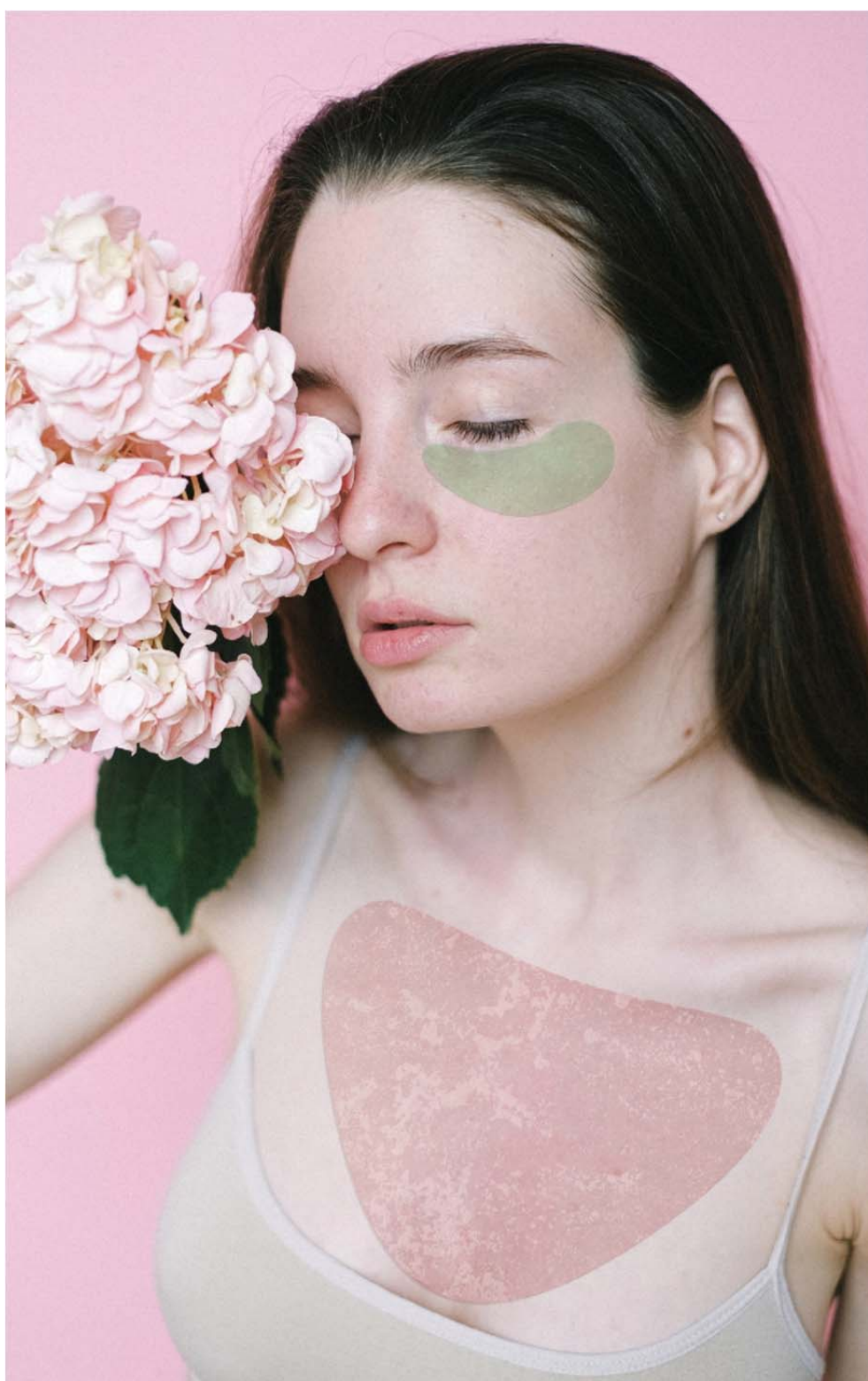
LIP CARE FILM

SIZE: 10*5 CM



NASOLABIAL FOLD CARE FILM

SIZE: 7.8*6.5 CM



RAINBOW EYE PATCHES

Rainbow eye patches are made of nutritious konjac fiber and 7 kinds of natural plant ingredients, a functional eye mask for comprehensive improvement of various eye skin problems.

Semi circular arc patch design, close to the skin around the eyes, 3D netted konjac fiber, 3 times essence bearing capacity.

7 days one week, improve one kind of eye problem every day, let the eyes glow.



Bamboo Charcoal

Adsorption and control oil. Eliminate black and exfoliating.



Blueberry

Nourishing and whitening. Repair and antioxidant.



Turmeric

Anti-inflammation, anti-oxygen, firming and smoothing.



Rose

Detoxifying, beautifying and nourishing skin.



Lemon

Brightening and Whitening. Reduce the pigmentation.



Lavender

Relieve and calm. Accelerate cell regeneration.



Aloe

Nourishing and Moisturizing. Relieves discomfort and antianaphylaxis.

This product has been qualified against Microbial Contamination
BP B/EP & USP <61/62>
ISO 9001 · ISO 22716 & GMP · BSCI
No coloring · No additives · Bio-degradable · Eco-friendly

LIPOPEPTIDE ACETATE ANTI AGING AND TIGHTENING DECOLLETE MASK

3 TYPES
STAR LEVEL
INGREDIENT FORMULA

Hyaluronic acid:

Hyaluronic acid formula, replenish moisture for the skin, repair the damaged skin barrier in time, and make the skin delicate and moisturized.

Niacinamide:

Niacinamide formula, fights skin inflammation, inhibits melanin deposition, and makes the skin bright and transparent.

Ipoepptide Acetate:

Ipoepptide acetate formula, improves the metabolism of skin cells, diminishes fine lines, and makes the skin smooth and firm.

V-SHAPED ARC CUT

Apply below the clavicle line, fits the chest skin area.

Wide top and narrow bottom, pulling the skin texture, pull lifting and firming.

Moderate size, convenient for daily use.



Natural and Safe, Family Share

Loving care every inch of the skin

KONJAC WIPE



With unique network texture, 360° gently exfoliating and cleansing your skin. Green+ Eco-friendly+ Bio-degradable.



Effectively removing the impurities, leading into skin deeply and moisturizing quickly.



No coloring, no alcohol, no stimulation. light and comfortable, Baby under 3 years and sensitive skin can use safely.



SQUARE

SIZE: 17*17*0.2 CM

KW 170



CIRCLE

SIZE: Ø6.5*0.1 CM

KW 060



RECTANGLE

SIZE: 8.5*5.8*0.15 CM

KW 085



RECTANGLE

SIZE: 17*11*0.2 CM

KW 110

Pure ingredients: highly purified 100% konjac plant fiber and multiple reverse osmosis purify water process of natural purify water, no chemical additive, no pigment, no pigment.

Soft and comfortable: uniform and fine pores, light and breathable, strong water absorption, flexible and elastic, soft and comfortable to touch.

Cleansing and moisturizing: water content is 5 times of its own weight, moistening and cleansing without hurting the skin. More than 96% glucomannan can keep the skin moisturizing for a long time without dryness.

Weak acidic pH: close to healthy skin pH, protect skin sebum film.

Eco-friendly and safety: biodegradable, nature and non-stimulation, suitable for all skin types, sensitive and baby can be used.



KONJAC WIPE FOR BABY

Natural without stimulation, without additives. Deep moisturizing factor -Glucomannan- like mammy's care of a baby tender skin; Replace towel completely.



KONJAC WIPE FOR TRAVELLING

Deep cleansing by it, or matching the cleanser with your skin. Easy to carry on. Be recycled after using, best for biodegradable, green and environmental protection.



KONJAC WIPE FOR REMOVING MAKEUP

Rich in Sodium Hyaluronate, and variety of natural plant extracts, such as Portulaca Oleracea, Hamamelis Virginiana and Calendula Officinalis etc. Removing makeup completely and moisturizing without residues and no tight. One wipe dual-used: after removing makeup, you can cleanse your face with the same konjac wipe. At the same time, repairing damaged skin caused by the cosmetics.